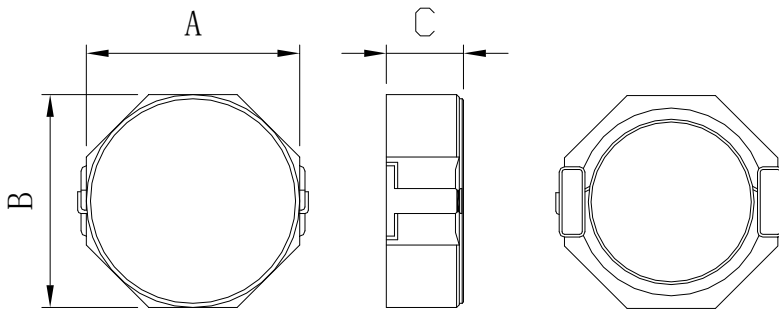


贴片功率电感  
SMD POWER INDUCTOR

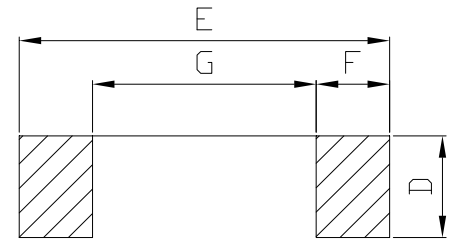
Type Name: CKRH-8D Series



Dimensions/外形尺寸图(Unit:mm)



Land patterns/贴装尺寸



Shape and Size:(Dimensions are in mm)

Type Name/型名	A	B	C	D	E	F	G
CKRH8D28	8.0±0.3	8.0±0.3	3.0MAX	2.8REF	10.1REF	2.0REF	6.1REF
CKRH8D38	8.0±0.3	8.0±0.3	4.0MAX	2.8REF	10.1REF	2.0REF	6.1REF
CKRH8D43	8.0±0.3	8.0±0.3	4.5MAX	2.8REF	10.1REF	2.0REF	6.1REF

Specifications/规格

TYPE NAME: CKRH8D28				
Part No./品名	Inductance/电感值 (μH)	Test Condition/ 测试条件	D.C.R./直流阻抗 (mΩ)MAX.	Saturation Current/ 饱和电流(A) MAX.
CKRH8D28-1R0NC	1.0±30%	100KHz,1V	11.0	6.50
CKRH8D28-2R0NC	2.0±30%	100KHz,1V	15.6	4.50
CKRH8D28-2R7NC	2.7±30%	100KHz,1V	18.2	4.00
CKRH8D28-4R7NC	4.7±30%	100KHz,1V	24.8	3.41
CKRH8D28-6R8NC	6.8±30%	100KHz,1V	39.0	2.80
CKRH8D28-100NC	10±30%	100KHz,1V	54.0	2.30
CKRH8D28-150MC	15±20%	100KHz,1V	69.0	1.90
CKRH8D28-220MC	22±20%	100KHz,1V	122.2	1.40
CKRH8D28-330MC	33±20%	100KHz,1V	156.5	1.30
CKRH8D28-470MC	47±20%	100KHz,1V	228.5	1.15
CKRH8D28-680MC	68±20%	100KHz,1V	324.3	0.93
CKRH8D28-101MC	100±20%	100KHz,1V	480.2	0.75

贴片功率电感  
SMD POWER INDUCTOR

**TYPE NAME: CKRH8D38**

Part No./品名	Inductance/电感值 ( $\mu$ H)	Test Condition/ 测试条件	D.C.R./直流阻抗 ( $m\Omega$ )MAX.	Saturation Current/ 饱和电流(A) MAX.
CKRH8D38-1R5NC	1.5 $\pm$ 30%	100KHz,1V	15.6	7.00
CKRH8D38-2R2NC	2.2 $\pm$ 30%	100KHz,1V	19.2	6.50
CKRH8D38-3R5NC	3.5 $\pm$ 30%	100KHz,1V	24.0	5.00
CKRH8D38-4R7NC	4.7 $\pm$ 30%	100KHz,1V	29.0	4.60
CKRH8D38-6R8NC	6.8 $\pm$ 30%	100KHz,1V	42.7	4.20
CKRH8D38-100MC	10 $\pm$ 20%	100KHz,1V	55	3.00
CKRH8D38-150MC	15 $\pm$ 20%	100KHz,1V	67	2.75
CKRH8D38-220MC	22 $\pm$ 20%	100KHz,1V	105	2.30
CKRH8D38-330MC	33 $\pm$ 20%	100KHz,1V	157	1.75
CKRH8D38-470MC	47 $\pm$ 20%	100KHz,1V	211	1.52
CKRH8D38-680MC	68 $\pm$ 20%	100KHz,1V	290	1.30
CKRH8D38-101MC	100 $\pm$ 20%	100KHz,1V	410	1.05

**TYPE NAME: CKRH8D43**

Part No./品名	Inductance/电感值 ( $\mu$ H)	Test Condition/ 测试条件	D.C.R./直流阻抗 ( $m\Omega$ )MAX.	Saturation Current/ 饱和电流(A) MAX.
CKRH8D43-R68NC	0.68 $\pm$ 30%	100KHz,1V	9.5	8.0
CKRH8D43-1R2NC	1.2 $\pm$ 30%	100KHz,1V	12.2	7.0
CKRH8D43-2R0NC	2.0 $\pm$ 30%	100KHz,1V	14.0	6.5
CKRH8D43-3R3NC	3.3 $\pm$ 30%	100KHz,1V	19.0	5.9
CKRH8D43-4R7NC	4.7 $\pm$ 30%	100KHz,1V	22.0	5.0
CKRH8D43-6R8NC	6.8 $\pm$ 30%	100KHz,1V	28.0	4.6
CKRH8D43-100MC	10 $\pm$ 20%	100KHz,1V	36.0	3.8
CKRH8D43-150MC	15 $\pm$ 20%	100KHz,1V	62.0	2.9
CKRH8D43-220MC	22 $\pm$ 20%	100KHz,1V	75.0	2.6
CKRH8D43-330MC	33 $\pm$ 20%	100KHz,1V	125	2.2
CKRH8D43-470MC	47 $\pm$ 20%	100KHz,1V	168	1.8
CKRH8D43-680MC	68 $\pm$ 20%	100KHz,1V	270	1.5
CKRH8D43-101MC	100 $\pm$ 20%	100KHz,1V	360	1.3

※ The saturation current when the inductance decreases to 65% of initial value. (Ta=25°C)